

County Surveyor's Record, Tillamook County, Oregon

CHAINS

(40) $S \frac{1}{16} \frac{34}{35}$ 1S10

Found by Iron Pipe \pm 64 above
Ground & Two Bearing
Trees (scribed)

| | | | |
|---------|------|------------------|-----------------------------|
| 30" Hem | S2°E | 600 | "S $\frac{1}{16}$ S35 BTCS" |
| 24" Hem | N55W | 21 ²³ | "S $\frac{1}{16}$ S31 BTCS" |

Cor is \pm 200 @ N55E ~~E~~ End of Crown
Rd # 107

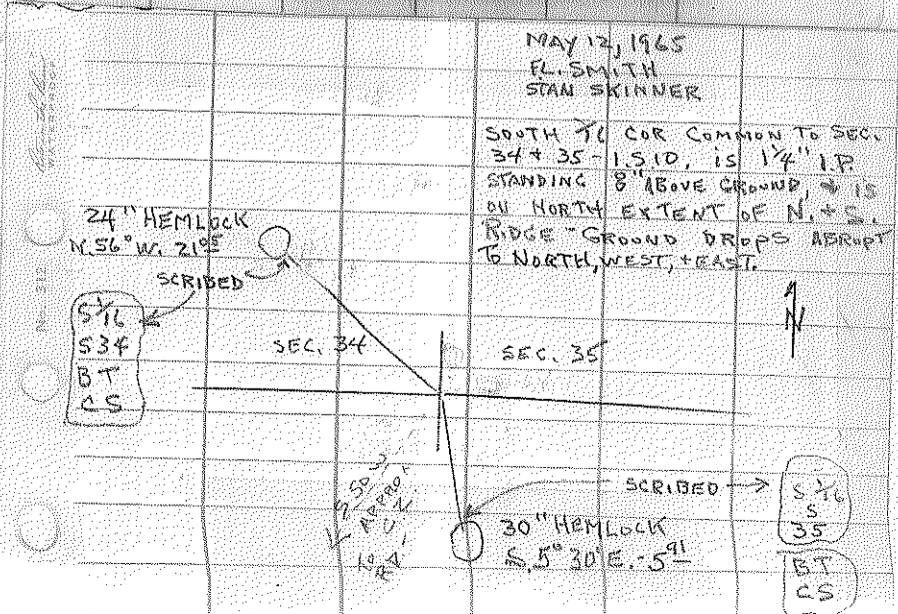
SASKinner 10-11-65
G Arthur

"F.I. Smith Showed Me This
Cor. & said it was the where
The Cor was so I scribed
The Trees for the Cor
& set the pipe."

BOOK 5

Conditions Approval, only unless
can verify these found trees by
means of any record which may
be resurveyed from file.

10/21/65 K. K. Co.



BOOK 5